

Instructions for use

Please read this information carefully
because it will help you to use OPTASE® HYLO FORTE® properly

OPTASE® HYLO FORTE®

What is OPTASE® HYLO FORTE®?

OPTASE® HYLO FORTE® is a sterile, preservative free eye solution for ocular use.

Composition:

Active ingredient: Glycerin (0.3%).

Inactive ingredients: Borax, Boric Acid, Citric Acid Anhydrous, Sodium Chloride, Sodium Citrate Dihydrate, Sodium Hyaluronate, Water.

Each bottle contains 10ml of eye drops solution.

When is OPTASE® HYLO FORTE® indicated?

OPTASE® HYLO FORTE® is for use as a lubricant to prevent further irritation, and relieve dryness of the eye. It may also be used as a protectant against further irritation associated with dry eye.

When should OPTASE® HYLO FORTE® be used?

To maintain the ocular surface (cornea and conjunctiva) it must be kept continuously moist. Normally our tears fulfill this role. However, in some cases there are not enough tears or their composition is disturbed e.g. due to surgery or contact lens wear. In these cases, the eye reacts with discomfort, irritation, burning, foreign body sensation, or tiredness. After surgical procedures it is vital that the ocular surface is sufficiently lubricated. It is advisable to keep the eye surface moistened by applying a lubricant on a regular basis. OPTASE® HYLO FORTE® provides rich lubrication and moisturisation of the eye and helps prevent further irritation.

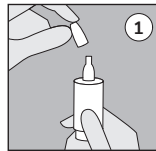
OPTASE® HYLO FORTE® contains Glycerin which is a humectant (moistening effect) that comes from plant sources. OPTASE® HYLO FORTE® is a product with no alcohol, no preservatives and no ingredients of animal origin.

How should OPTASE® HYLO FORTE® be used?

The OPTASE® HYLO FORTE® bottle system is a unique delivery system to the US Market: please take particular care to review the instructions carefully. For video instructions on how to use the OPTASE® HYLO FORTE® bottle, please scan the QR code on

the side of the box. The design of the unique bottle system ensures that the size and speed of each drop are the same regardless of the pressure applied to the base of the bottle. Please do not use OPTASE® HYLO FORTE® if any part of the protective seal on the folding carton is broken or damaged before using for the first time. **During use, please avoid any contact between the tip of the bottle and your eye or your skin. After application, ensure that the tip is dry. Then replace the over-cap back on the bottle.**

Priming the system:

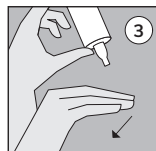


To prime the system, remove the over-cap (see picture 1) and invert the OPTASE® HYLO FORTE® bottle with its tip pointing down.

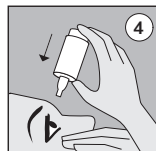


Place two fingers on the base of the bottle (see picture 2) and press your thumb on the shoulder of the bottle then press and release firmly on the base several times until the first drop is released. The bottle is now primed.

General use:



1. Remove the over-cap and invert the OPTASE® HYLO FORTE® bottle with its tip pointing down. Support the hand holding the bottle with the other hand (see picture 3).




2. Hold the bottle as previously shown (see picture 2). With your head leaning back slightly, pull down your lower eyelid (see picture 4). Press the base of the bottle to enable the pump function, while ensuring that no direct contact is made with the eye. This enables the bottle to release one drop into the conjunctival sac. Release and repeat for the other eye. After each application, slowly close your eye to allow the fluid to spread evenly over the eye surface. **Please avoid any contact between the tip of the bottle and your eye or your skin.**

What else do you need to know?

- Keep out of reach of children. OPTASE® HYLO FORTE® is for external use only. Please wash and dry your hands before use.
- During use, and to avoid contamination, please avoid any contact between the tip of the bottle and your eye or your skin.
- Do not touch the tip of the bottle with fingers.
- Do not touch the tip of container to any surface.
- After application, ensure that the tip is dry, then replace the over-cap back on the bottle.
- The OPTASE® HYLO FORTE® bottle is for single person use only.
- Do not touch the eye or contact lens with the tip of the bottle.
- Please allow at least 10 minutes after the application of other ophthalmic drops before applying OPTASE® HYLO FORTE®. Eye ointments should always be administered last.

What do you need to know about storing OPTASE® HYLO FORTE®?

- OPTASE® HYLO FORTE® should not be stored above 25°C/77°F , and protected from direct sunshine and heat.
- OPTASE® HYLO FORTE® can be used for 6 months after opening.
- The shelf life is 3 years.
- Do not use after the expiry date shown on the bottle and imprinted on the packaging carton, or after discard date (6 months from opening).
- Do not use OPTASE® HYLO FORTE® in the event it has frozen, or it has been stored in hot conditions for a long time.
- Do not use if the bottle is damaged, or the tamper evident seal is damaged.
- Discard the empty bottle appropriately.

Are there any Contraindications for OPTASE® HYLO FORTE®?

Stop use and ask doctor if you feel pain, changes in vision occur, redness or irritation of the eye lasts or if condition worsens or lasts more than 72 hours.

Do not use if you are sensitive to any of the ingredients. In very rare cases adverse reactions like hypersensitivity, burning or excessive tearing, foreign body sensation and other temporary irritations may occur. Discontinue use immediately. If in doubt ask a healthcare professional.

Revision date:

October 2024

Manufactured for:

SCOPE

Scope Health Inc.

79 Madison Ave. 8th Floor,
New York, NY 10016, USA

Questions: +1 917 795 4227

www.optase.com

hello@optase.com

The OPTASE® brand and Scope logo are trademarks of Scope Ophthalmics Ltd.

HYLO® and HYLO FORTE® are registered trademarks of URSAPHARM Arzneimittel GmbH.

Product of Germany