

## Instructions for use

Please read this information carefully as it will help you to use OPTASE® Dry Eye INTENSE Drops properly

# OPTASE® DRY EYE INTENSE DROPS



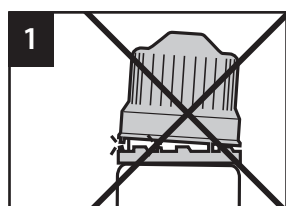
## What is OPTASE® Dry Eye INTENSE Drops?

OPTASE® Dry Eye INTENSE Drops is a sterile, preservative free eye solution for use as an eye lubricant, to be used within 3 months of opening.

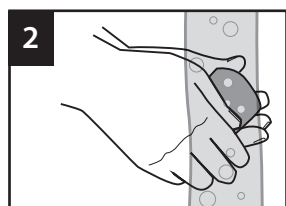
OPTASE® Dry Eye INTENSE Drops is for use as a lubricant to relieve symptoms of dry eyes such as irritation and burning sensations. It also may be used as a protectant against further irritation from dry eyes.

OPTASE® Dry Eye INTENSE Drops contains Glycerin. Glycerin is a humectant (moistening effect) that comes from plant sources. Glycerin reduces the damaging effects of high osmolarity on the ocular surface. Glycerin and other natural compounds protect both the surface of the eye against cell damage and assist healing. OPTASE® Dry Eye INTENSE Drops contain no alcohol, no preservatives, and are contact lens compatible.

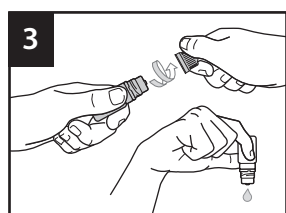
## Instructions for use



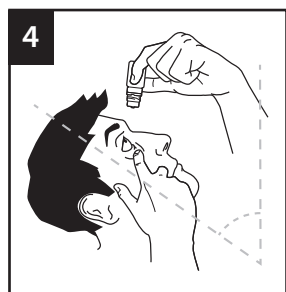
Before use please ensure the tamper evident seal is intact.  
Do not squeeze the bottle in an upright position.



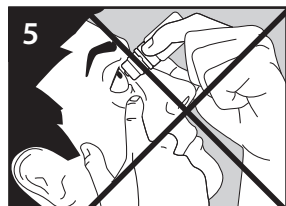
Wash hands well with soap and water, and dry before use.



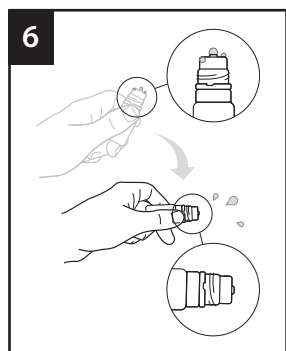
Hold the bottle just below the cap and twist the cap to open.  
Place the cap on a clean surface.  
Hold the bottle upside down and gently squeeze to release the first drop. Discard this first drop.



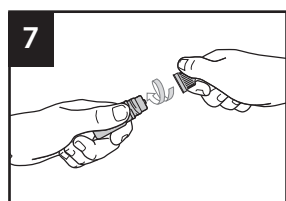
Tilt your head backwards and hold the bottle above your eye.  
Pull the lower eyelid down and look up.  
Squeeze the bottle gently and let a drop fall into your eye. Blink a few times so that the drop spreads over the eye.



Avoid contact between the tip of the bottle and your eye or eyelids.



After use, flick/shake the bottle (vigorously) downwards, ensuring no residual drop is left. Multiple flicks/shakes may be required before replacing the cap. Do not touch, wipe or clean the tip of the nozzle.



When replacing the cap, do not squeeze the bottle. To avoid contamination when replacing the cap, do not touch, wipe or clean the tip of the nozzle.

Precautions and warnings

- For external use only.
- Once opened, **use within 3 months**, and within the stated expiry date on the bottle/carton.
- Discard any unused product after 3 months.
- To avoid contamination, please wash and dry hands before use, do not touch, wipe or clean the top of the nozzle. Avoid contact between the tip of the bottle and your eye or eyelids.
- The OPTASE® Dry Eye Intense Drop bottle is for single person use only, do not share bottles.
- Do not deliver more than 25 drops per 24h period, and do not deliver more than 25 drops consecutively.
- Do not drain the bottle in a single use. Do not refill the bottle.
- After use, flick/shake the bottle (vigorously) downwards, ensuring no residual drop is left. Multiple flicks/shakes may be required before replacing the cap.
- Always replace the cap tightly with a clean, dry hand, and without squeezing the bottle.
- Leave at least 10 minutes between applications of the drop and an ophthalmic medication. Eye ointments should always be administered last.
- **Do not use** if you puncture, pierce or otherwise tamper with the applicator tip or bottle.
- **Do not use** if this product changes color or becomes cloudy.
- **Do not use** if the bottle or the tamper evident seal is damaged.
- **Do not use** if you are sensitive to any ingredient in this product.
- Store in a clean dry place, and not above 25°C/ 77°F. Do not freeze. Protect from direct sunshine and heat. Do not use in the event it has frozen, or has been stored in hot conditions for a long time.
- Stop use and ask doctor if you feel pain, changes in vision occur, redness or irritation of the eye lasts or if condition worsens or lasts more than 72 hours.
- In very rare cases adverse reactions like hypersensitivity, burning or excessive tearing, pain, foreign body sensation and other temporary local irritations may occur. Discontinue use immediately. If in doubt ask a healthcare professional.
- Keep out of reach and sight of children.
- Store the bottle in a clean, dry location. Do not store in moist conditions.
- Discard the empty bottle appropriately. Due to intentional overfill, a small volume of the solution will remain in the bottle.

**Composition:** Active ingredient; Glycerin. Inactive ingredients; Hydrochloric acid, Sodium hyaluronate, Sorbitol, Tromethamine, Water.

Latest revision of the text: **May 2024**

Other **OPTASE®** Dry Eye Products



Manufactured for:

**Scope Health Inc.**  
79 Madison Av, 27 E 28th St.  
New York, NY, 10016

For any questions, complaints or adverse event reporting, please contact our Customer Care team at:

**Ph:** +1 917 7954227  
**Email:** hello@optase.com  
**www.optase.com**

The OPTASE® brand and Scope logo are trademarks of Scope Ophthalmics Ltd.

Product of France

