

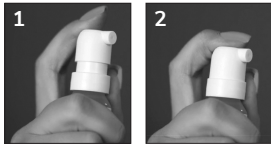
Instruction for use

Please read this information carefully as it will help you to use OPTASE® Comfort Dry Eye Spray properly

What this is and what it is intended for

OPTASE® Comfort Dry Eye Spray relieves dryness and irritation of the eyes, the eyelids, and the skin around the eyes. Always apply the spray on closed eyelids. OPTASE® Comfort Dry Eye Spray contains Glycerin. Glycerin is a humectant (moistening effect) that comes from plant sources. Glycerin reduces the damaging effects of high osmolality on the ocular surface. Glycerin and other natural compounds protect both the surface of the eye and the skin against cell damage, and assist healing. Thanks to its special design, the bottle can be used in any position. OPTASE® Comfort Dry Eye Spray is a product with no alcohol, no preservatives, and no ingredients of animal origin.

Instructions for use



Before use please ensure the tamper evidence seal is intact. Wash hands well with soap and water, and dry before use. Take off the protection cap. Before the first application, test the spraying mechanism a few times on your arm or in the air. Notice that there is a small step in the nozzle; to apply the spray, press the nozzle fully down. Next, hold the bottle approximately 6–10 inches (15–25 cm) from the eyes. Close both eyes and then apply 1–2 sprays on the eyelids, making sure to press the nozzle fully down to spray (Images 1 & 2).

Once you are ready, put the protection cap back on the nozzle head. You may use the spray several times a day and during contact lens wear. If you are using other personal care products in the eye area, let them settle for at least 10 minutes before applying the spray, or use the other product not earlier than 10 minutes after applying the spray. If you are using eye make-up, you may wish to apply the spray from a longer distance to avoid spreading, depending on the type of make-up. Use within six (6) months from opening the bottle and by the expiry date indicated in the stamp on the bottle.

Precautions and warnings

- For external use only.
- Use within six months of opening, and within the stated expiry date on the bottle.
- Do not use if the bottle is damaged.
- To avoid contamination, do not touch tip of container to any surface. Replace cap after using.
- The OPTASE® Comfort Dry Eye Spray bottle is for single person use only, do not share bottles.
- If the spray is applied on an open eye, you may temporarily experience mild discomfort.
- Do not use if this product changes color or becomes cloudy.
- Do not use if the bottle or the tamper evident seal is damaged.
- Do not use if you are sensitive to any ingredient in this product.
- Do not use if you puncture, pierce or otherwise tamper with the applicator nozzle or bottle.
- Store at 41–77°F, protect from direct sunshine and heat. Do not use in the event it has frozen, or has been stored in hot conditions for a long time.
- Please wash and dry your hands before use. Do not touch tip of the container with your eye, eyelid, finger or to any surface.
- Stop use and ask doctor if you feel pain, changes in vision occur, redness or irritation of the eye lasts or if condition worsens or lasts more than 72 hours. In very rare cases adverse reactions like hypersensitivity, burning or excessive tearing, pain, foreign body sensation and other temporary local irritations may occur. Discontinue use immediately. If in doubt ask a healthcare professional.
- Leave at least 10 minutes between applications of the drop and an ophthalmic medication. Eye ointments should always be administered last.
- Keep out of reach and sight of children.
- Store the bottle in a clean, dry location, in the original carton. Do not store in moist conditions. Do not use the product in the event it has frozen or it has been stored in hot conditions for a long time.
- Discard the empty bottle appropriately. Due to intentional overfill, a small volume of the solution will remain in the bottle.

Composition

Active Ingredient: Glycerin 1%.

Inactive Ingredients: Citric Acid Monohydrate, Polyoxyethylenesorbitan Monooleate, Potassium Chloride, Purified Water, Sea Buckthorn Seed Oil, Sodium Chloride, Sodium Hyaluronate, Sorbitan Monooleate, Tromethamine.

Latest revision of the text September 2022 (January 2024) • 2500-4

Product of Finland.



Scope Health Inc
79 Madison Av, 27 E 28th St.
New York, NY 10016

Phone: +1 917 795 4227
www.optase.com
hello@optase.com